



MONTHLY MEMBERSHIP PROGRESS REPORT

District 22 C

Results as of: 6/30/2017

GMT: OPEN

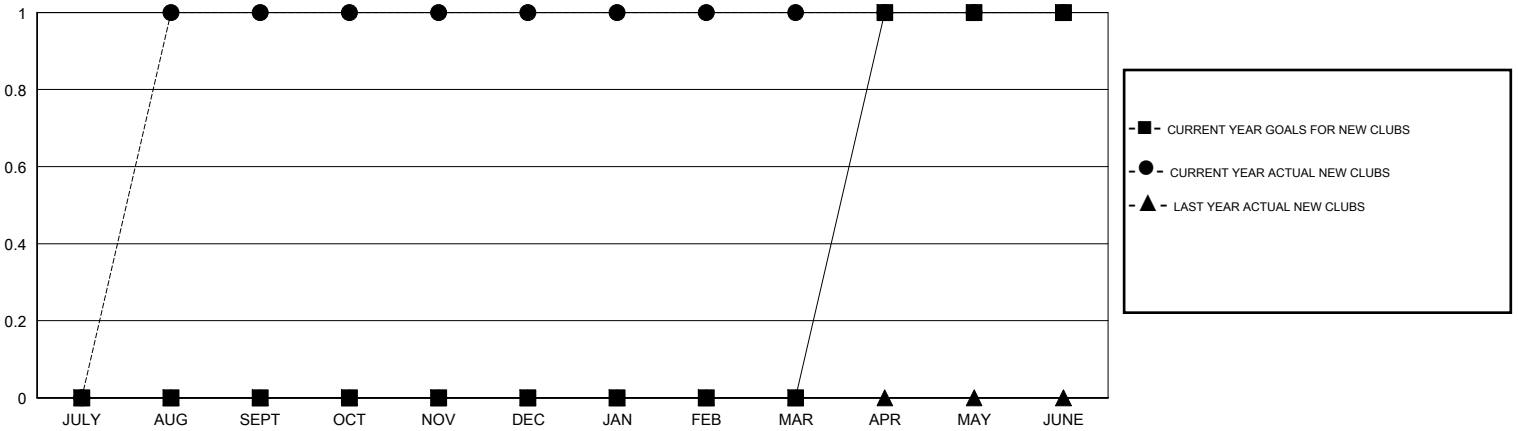
LOCATION MARYLAND

GMT CA

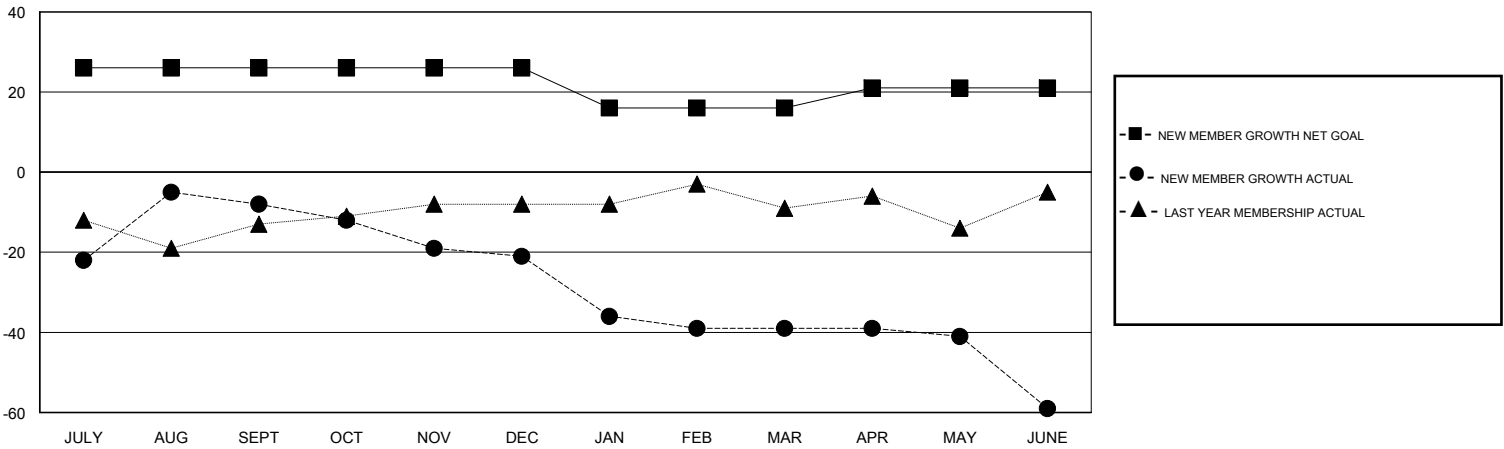
Clubs			
RESULTS FOR 2016-2017			
QUARTER	NEW CLUB GOAL	NEW CLUBS	DROPPED CLUBS
JULY/AUG/SEPT	0	1	1
OCT/NOV/DEC	0	0	0
JAN/FEB/MAR	0	0	0
APR/MAY/JUNE	1	0	0

Members			
RESULTS FOR 2016-2017			
QUARTER	NEW MEMBER GROWTH NET GOAL (not reinstated or transfers)	NEW MEMBER GROWTH ACTUAL (not reinstated or transfers)	DROPPED MEMBERS ACTUAL (including transfers)
JULY/AUG/SEPT	26	46	54
OCT/NOV/DEC	0	28	41
JAN/FEB/MAR	-10	24	42
APR/MAY/JUNE	5	33	53

GOALS AND ACTUAL NEW CLUBS CUMULATIVE



GOALS AND ACTUAL MEMBERS CUMULATIVE



DROPPED CLUBS: 1	28 CLUBS OF 49 ADDED 1 OR MORE NEW MEMBERS	GENDER DISTRIBUTION
		MALE 955 (67.49%)
		FEMALE 460 (32.51%)
DROPPED MEMBERS	CLICK HERE FOR CUMULATIVE MEMBERSHIP DATA	TOTAL FAMILY UNIT MEMBERS 221
DECEASED 37		FAMILY MEMBERS PAYING HALF DUES 118
CLUB CANCELLED 9		
OTHER 144		
TOTAL 190		